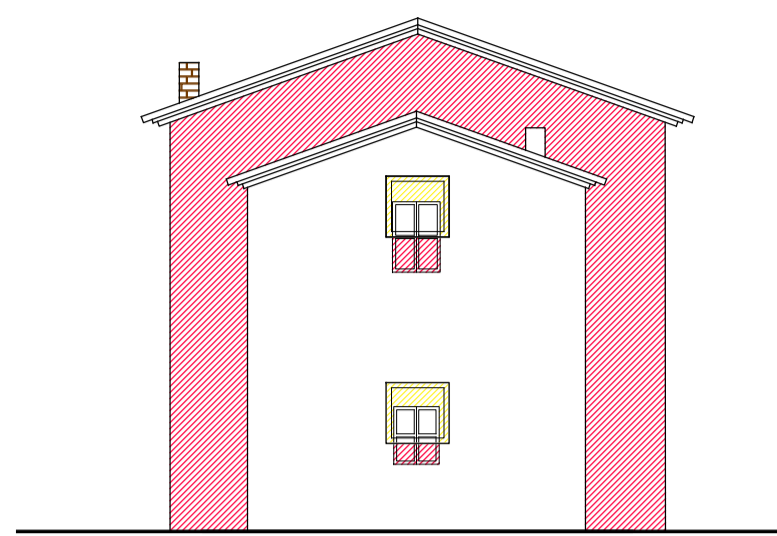
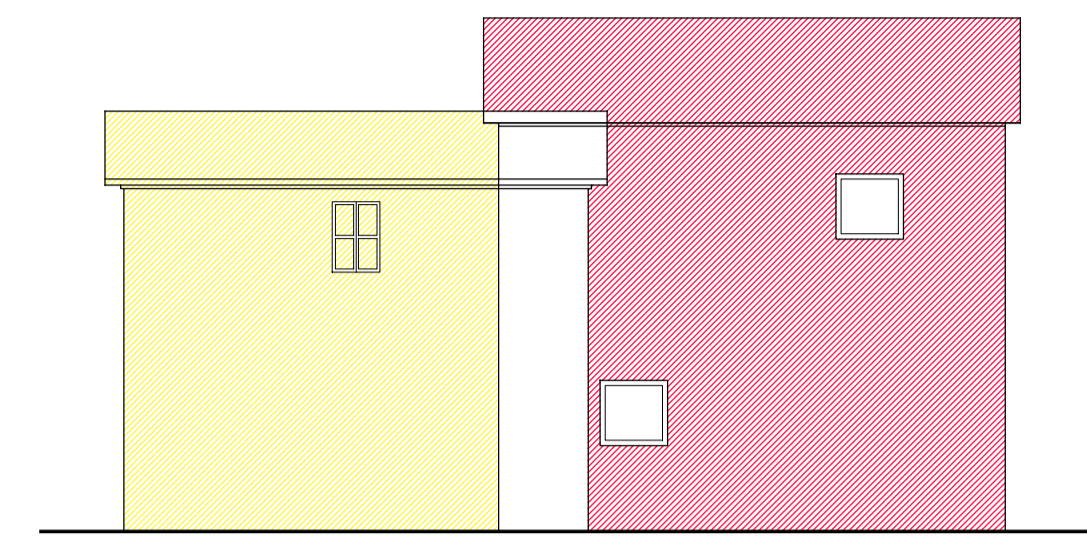


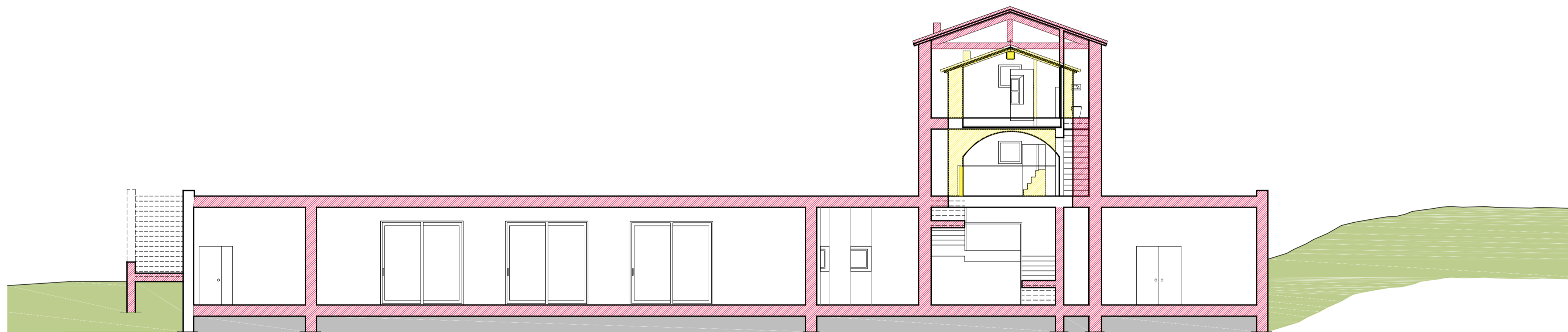
prospetto ovest



prospetto sud

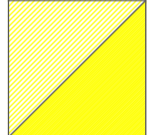
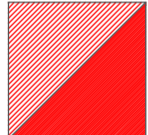


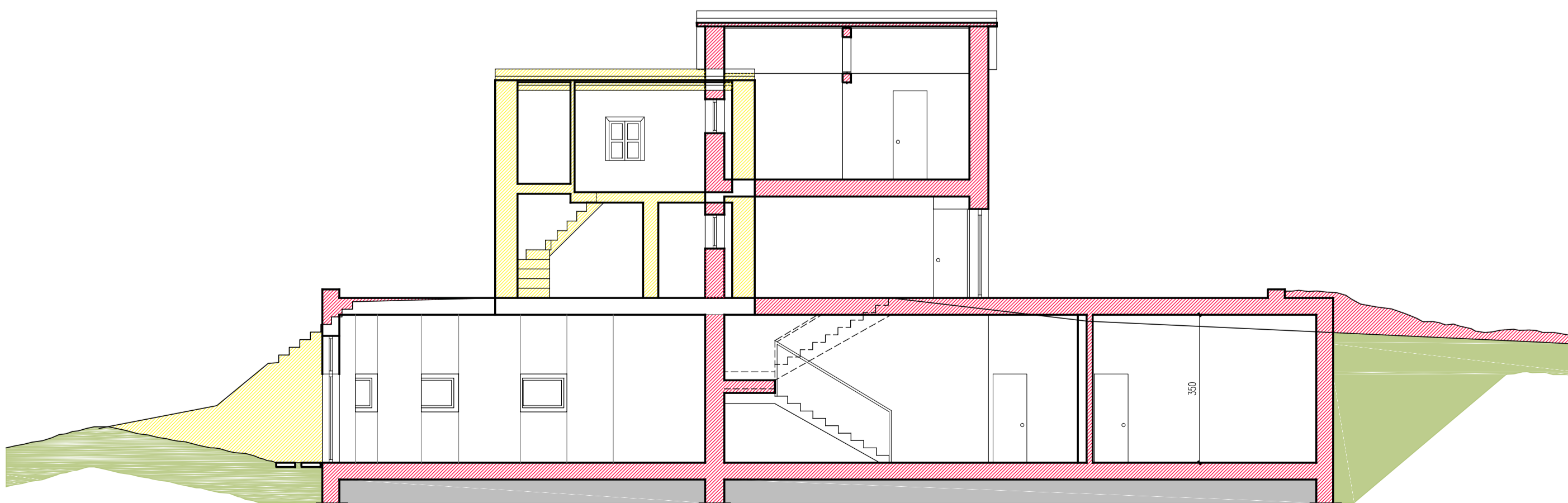
prospetto est



sezione B1B1

LEGENDA

-  demolizioni
-  nuove opere




sezione AA

VARIANTE al P.A.P.M.A.A.
 AGRICOLA FORTE 2012
**RISTRUTTURAZIONE ED
 AMPLIAMENTO GUARDIAVIGNA**

P. Vagaggini
 Committente SOC. AGRICOLA FORTE s.s.
 Comune di Castiglione d'Orcia (SI), Località Petrucci
 Progetto VARIANTE al P.A.P.M.A.A. AGRICOLA FORTE 2012
 Data 25 giugno 2015 848x13


 ING. PAOLO VAGAGGINI
 via Castellana 63 - 53023 Castiglione d'Orcia (SI)
 tel. 0577 887463 - fax. 0577 887578
 paolovaga@libero.it


 FABRIZIO ZAMBELLI
 ARCHITETTO
 Tavola **24** ristrutturazione ed ampliamento
 Guardavigna:
 RAFFRONTO sezioni e prospetti
 scala 1:100

STUDIO ARCHITETTURA