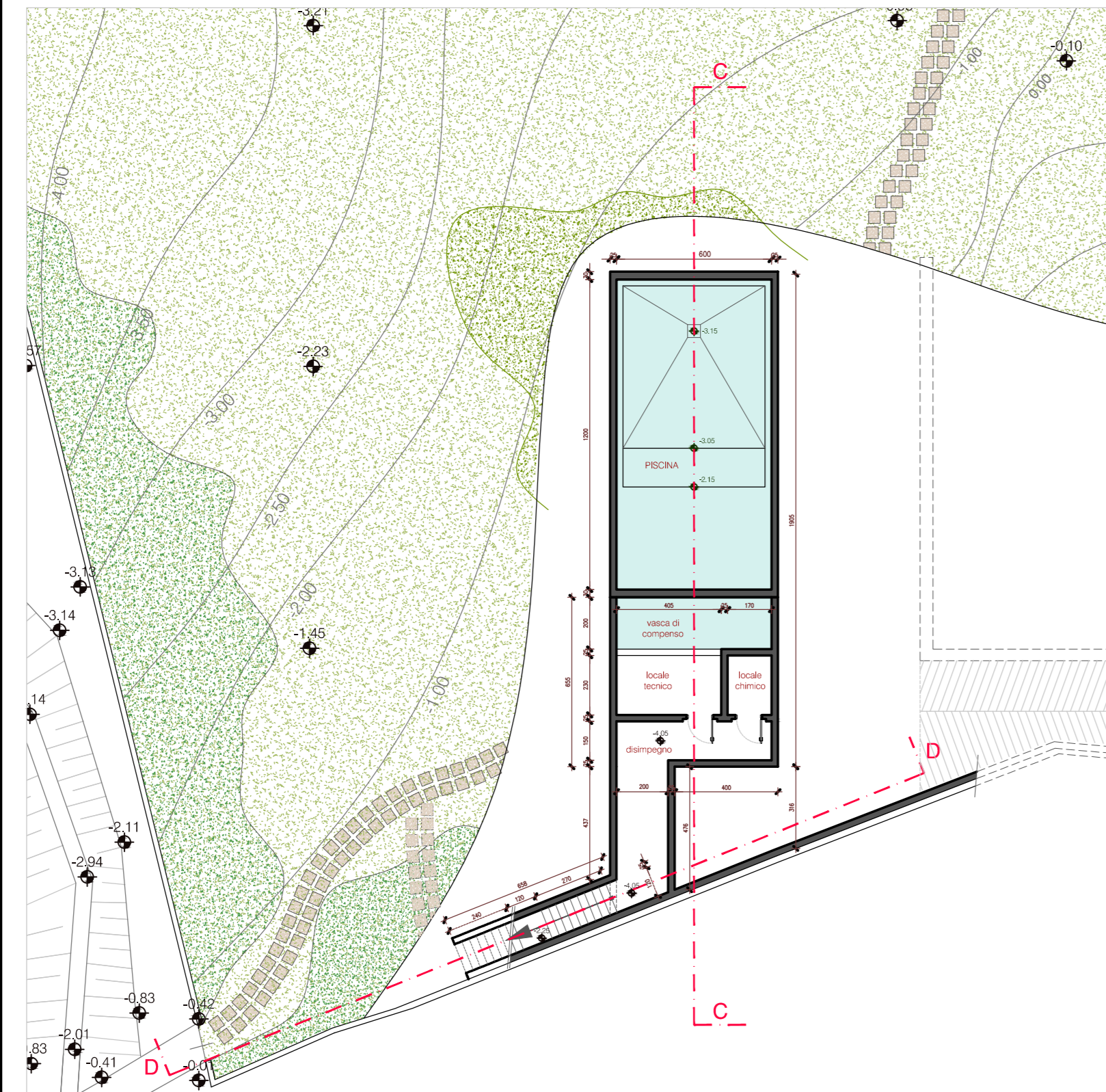
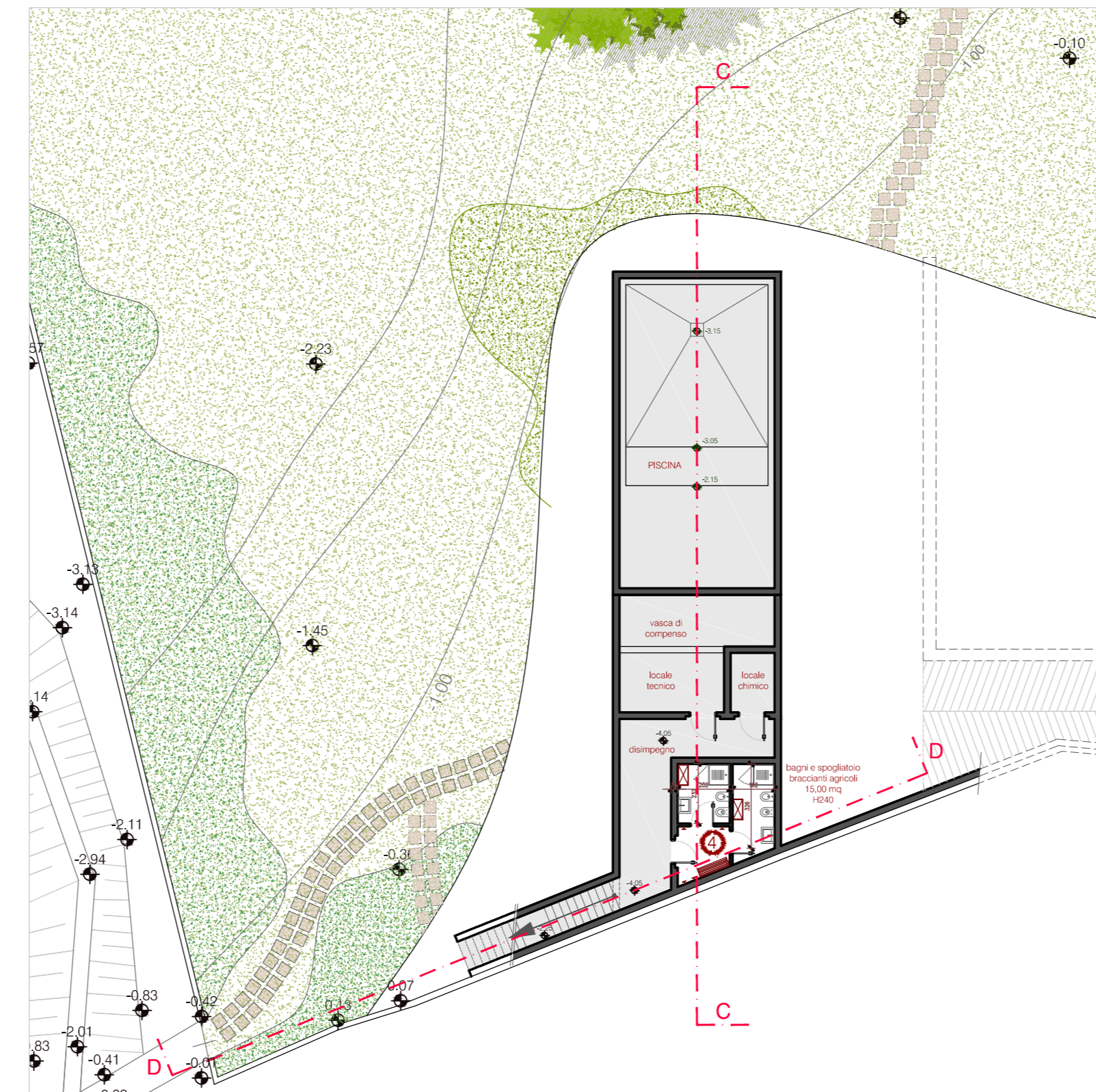


PERMESSO di COSTRUIRE



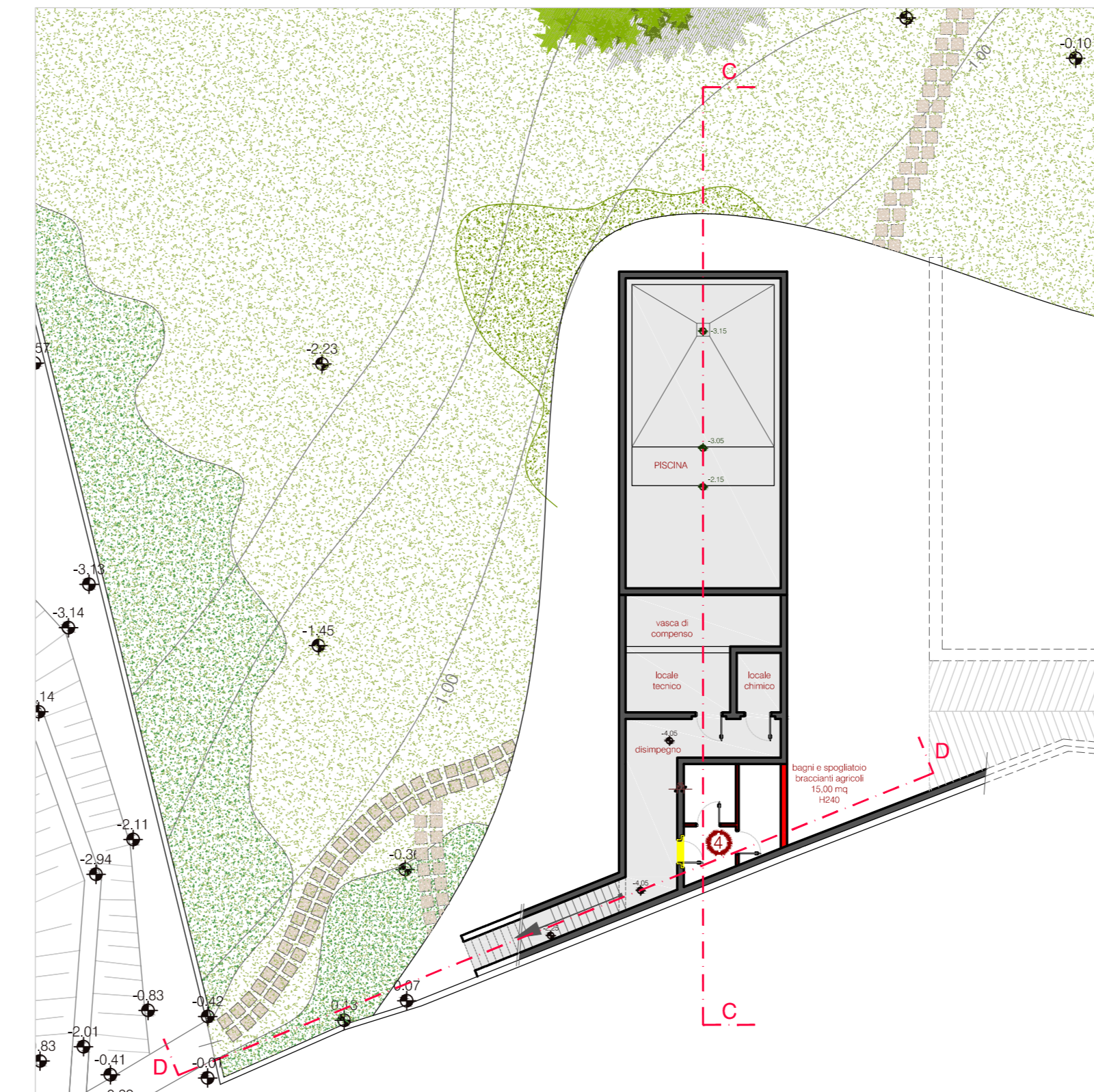
pianta piano interrato

PROGETTO





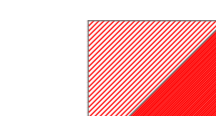
pianta piano interrato

RAFFRONTO



pianta piano interrato

LEGENDA

-  PdC prot. n. 15318 del 21/10/2013
-  demolizioni / sottrazioni rispetto al PdC
-  nuove costruzioni/aggiunte rispetto al PdC

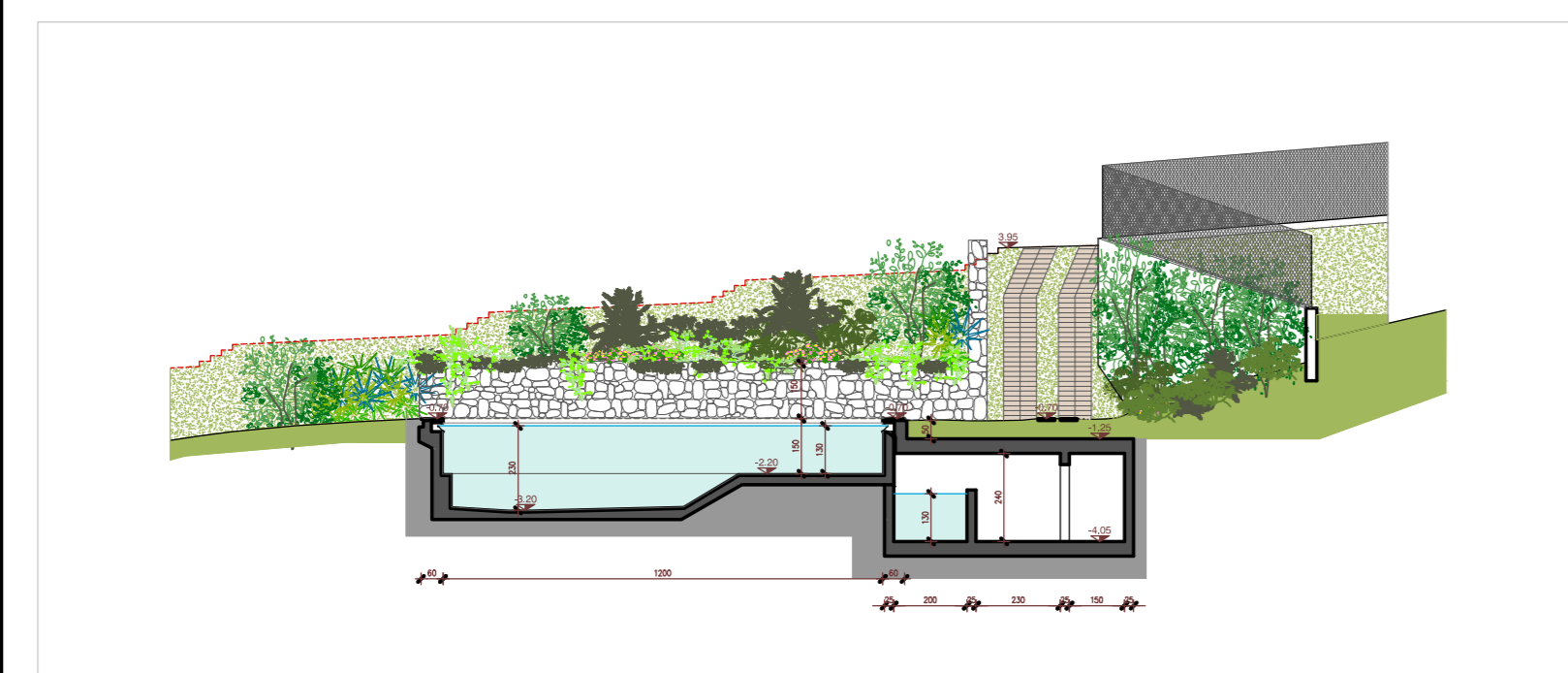
dati planivolumetrici

4 - nuovi bagni e spogliatoio per braccianti agricoli

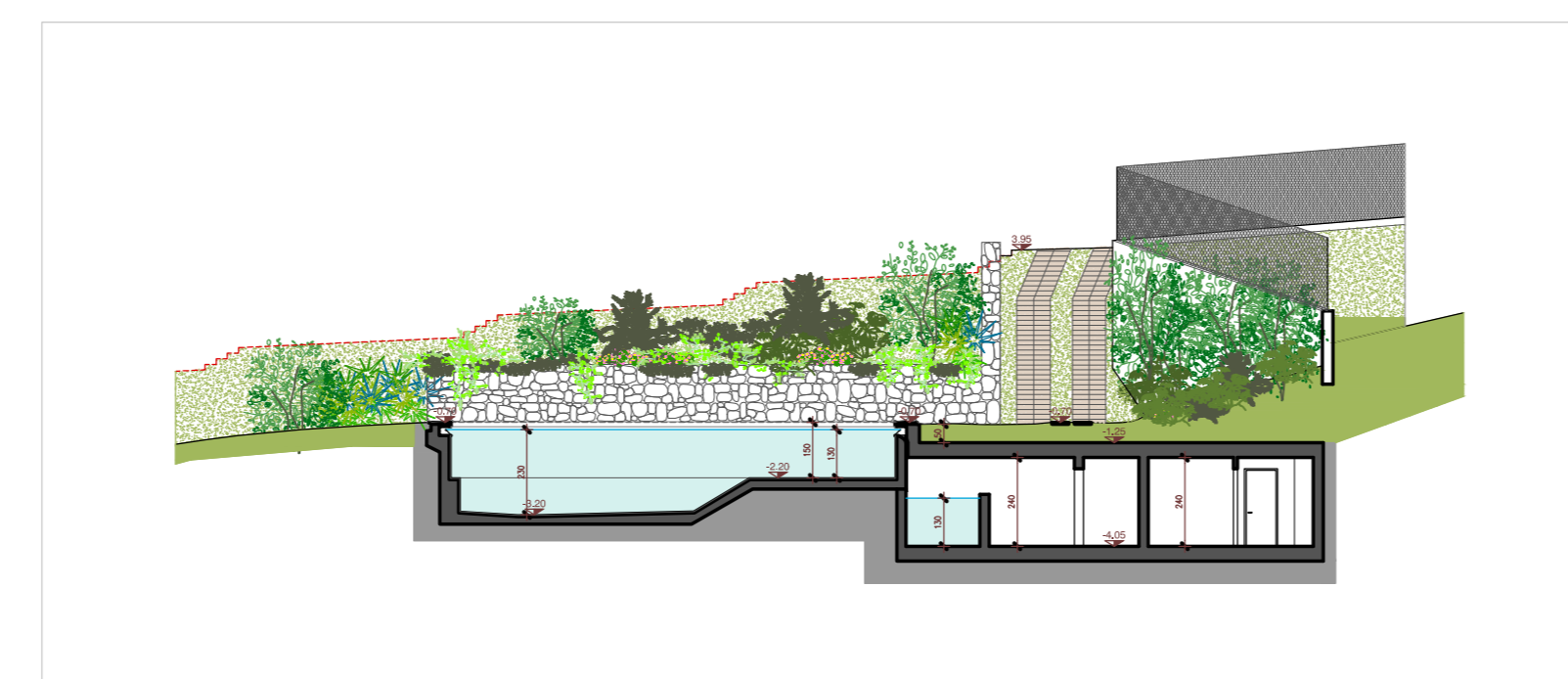
superficie utile 15,00 mq
volume interrato 36,00 mc



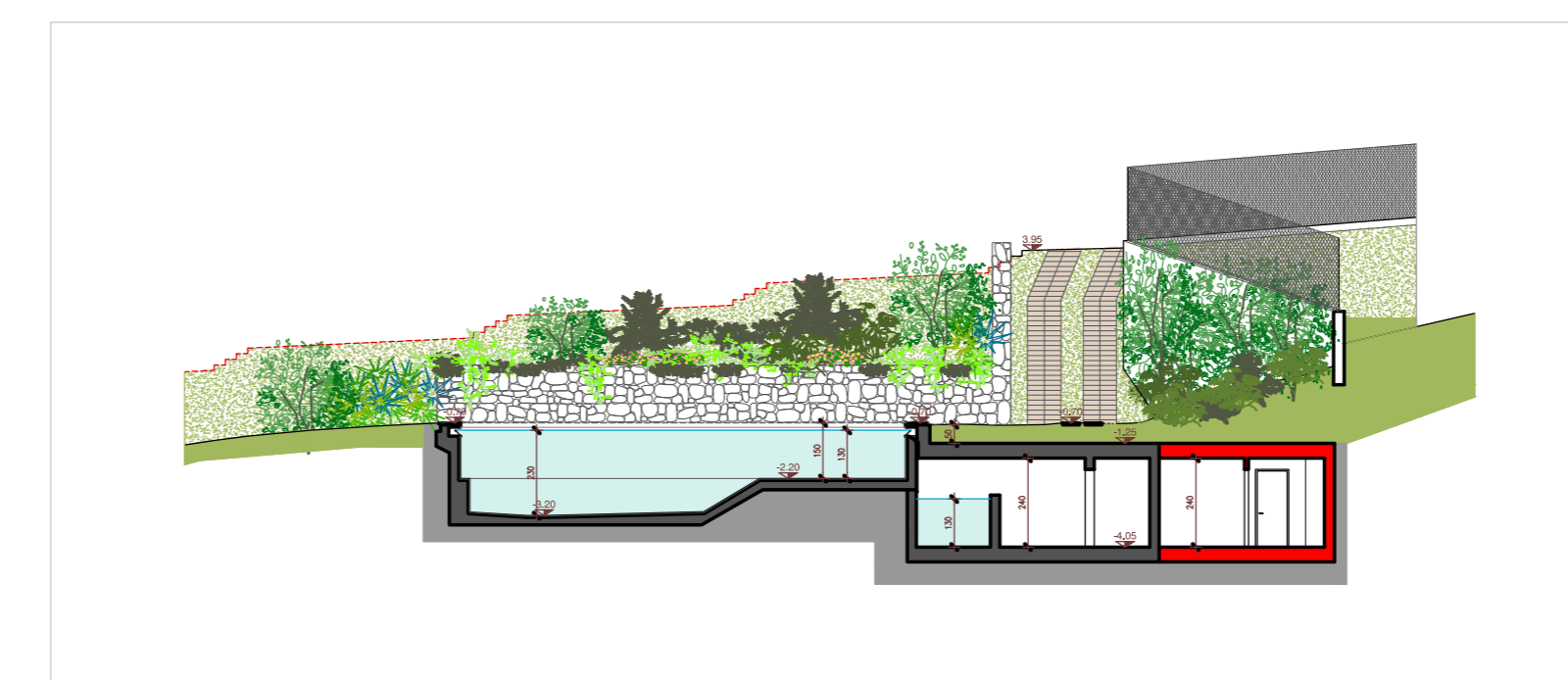
planimetria di riferimento _ scala 1:750



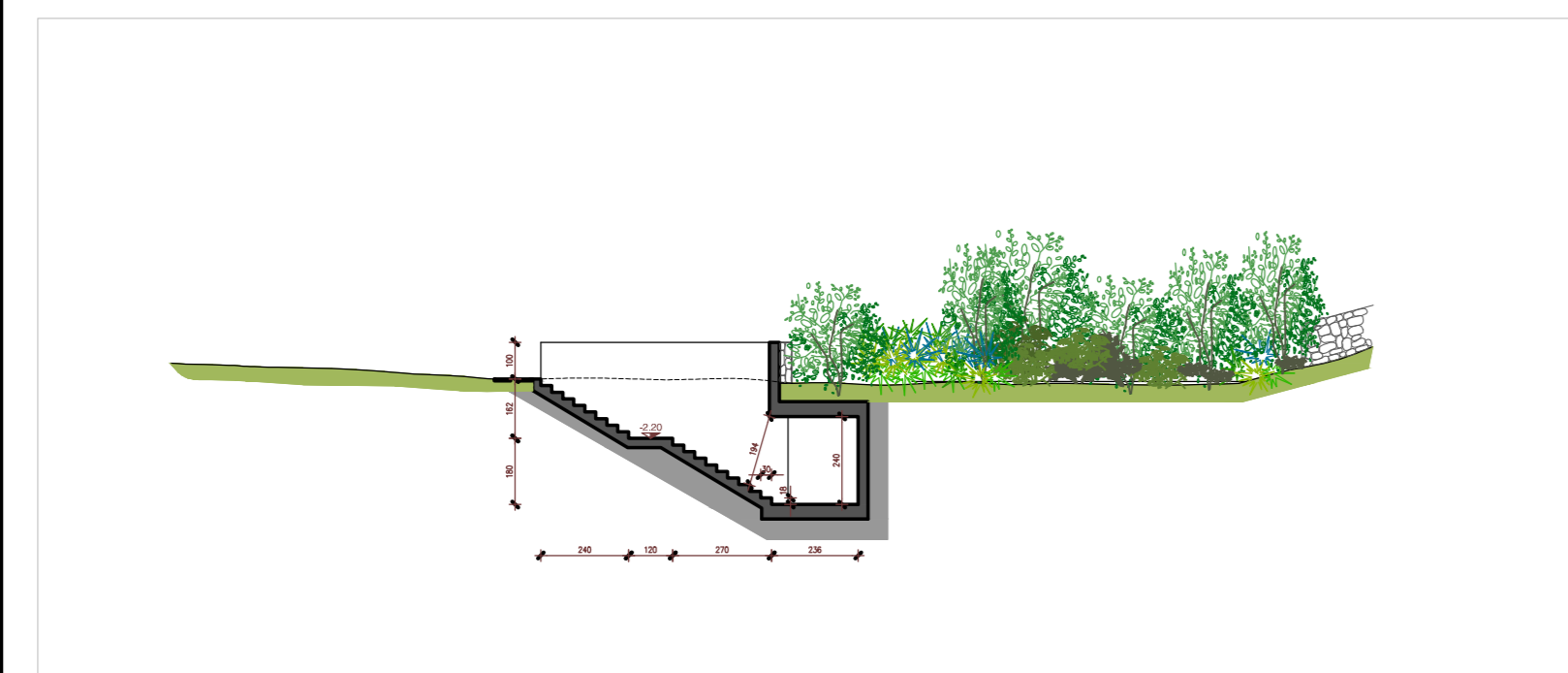
sezione CC



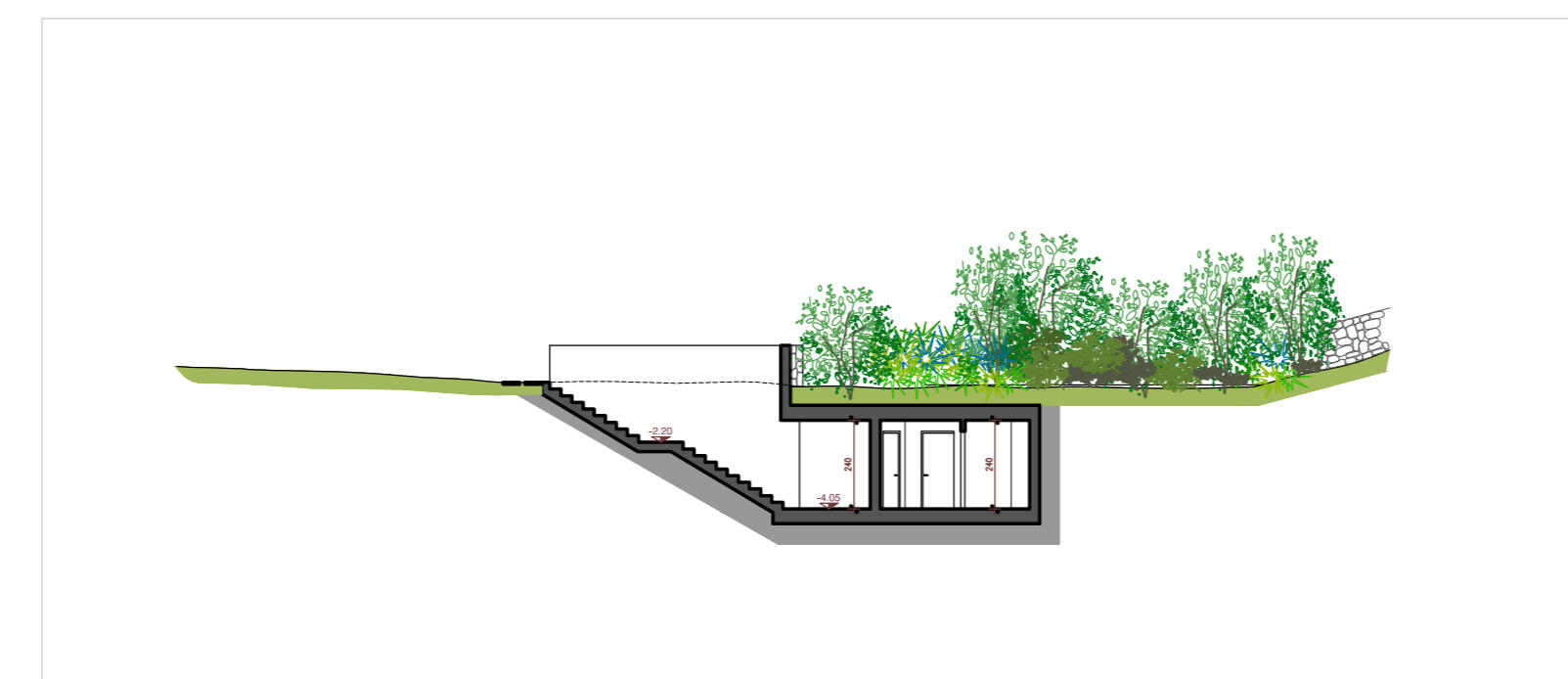
sezione CC



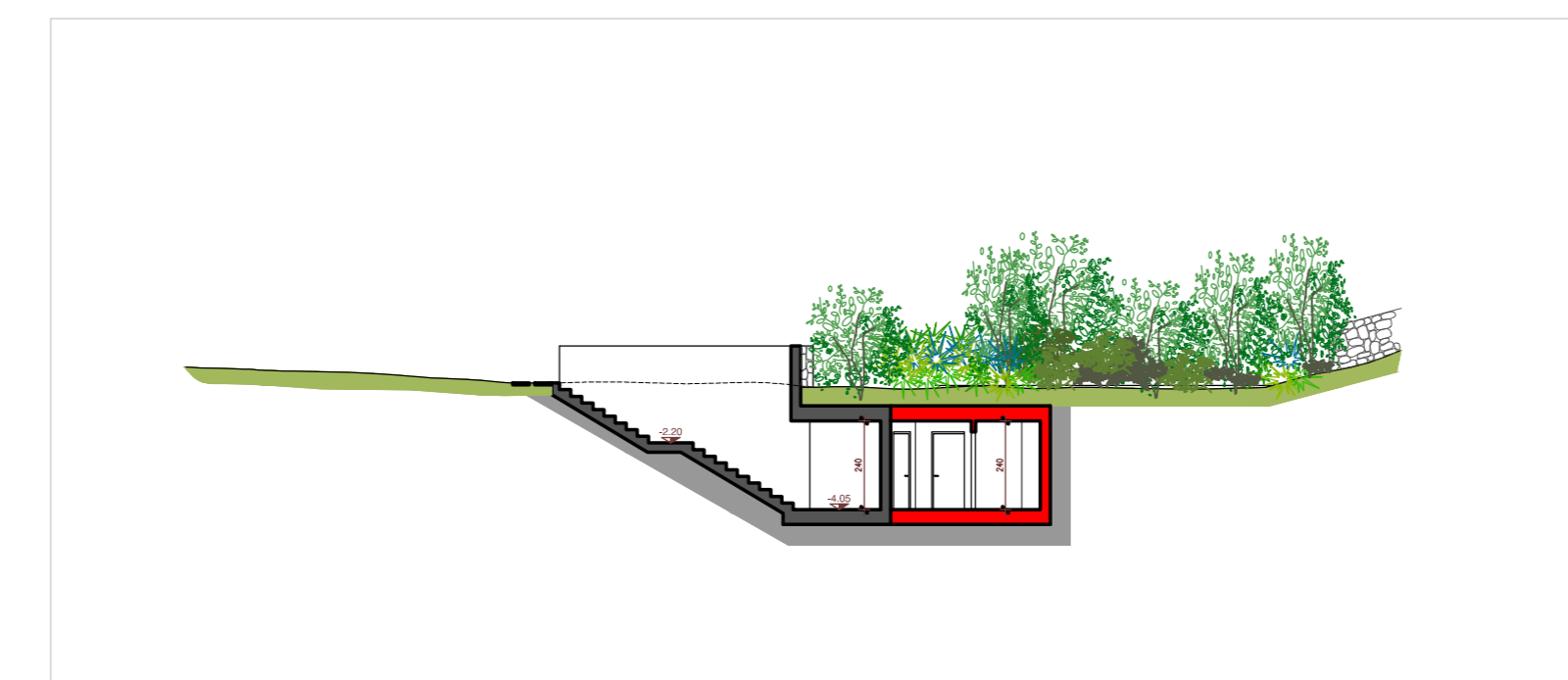
sezione CC



sezione DD



sezione DD



sezione DD

VARIANTE al P.A.P.M.A.A.
AGRICOLA FORTE 2012
PIANTA e SEZIONI

Comittente SOC. AGRICOLA FORTE s.s.
Comune di Castiglione d'Orcia (SI), Località Petrucci
Progetto VARIANTE al P.A.P.M.A.A. AGRICOLA FORTE 2012
Data dicembre 2013 848x13

ING. PAOLO VAGAGGINI
via Castellana 63 - 53023 Castiglione d'Orcia (SI)
tel. 0577 887463 - fax. 0577 887578
paolovaga@libero.it

Tavola **12** Nuovi bagni e spogliatoio per braccianti agricoli: stato approvato, progetto e raffronto
scala 1:200

ARCHITETTO FABRIZIO ZAMBELLI
Via S. Bernardino 66 - 24122 Bergamo - tel. +39 035 27 1985 r.a. - fax +39 035 43 27 188
www.studiozambelli.it - e-mail: info@studiozambelli.it - pec: info@studiozambelli.it