
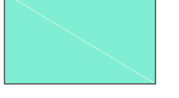







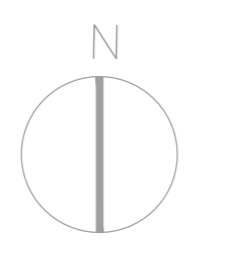


LEGENDA








zone a esclusiva funzione agricola

-  aree produttive agricole
-  aree produttive agricole di pertinenza ambientale
-  aree produttive agricole di pertinenza dei BSA
-  aree produttive agricole di pertinenza dei centri urbani
-  aree produttive agricole di valore paesistico
-  zone a prevalente naturalità

-  sagoma proprietà Azienda Agricola Forte
-  interventi previsti nel PAPMAA (1/10)
-  variazioni culturali previste nel PAPMAA (A/B)





sistema degli insediamenti in territorio rurale


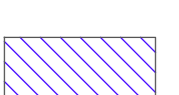
-  insediamenti da recuperare
-  insediamenti da riqualificare
-  insediamenti da adeguare
-  insediamenti consolidati. Peculiare
-  insediamenti consolidati. Congruente
-  insediamenti consolidati. Indifferente
-  insediamenti schedati

-  idrografia
-  viabilità

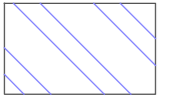
pericolosità geomorfologica

- classi di pericolosità
-  PFE
 -  PFME


pericolosità idraulica

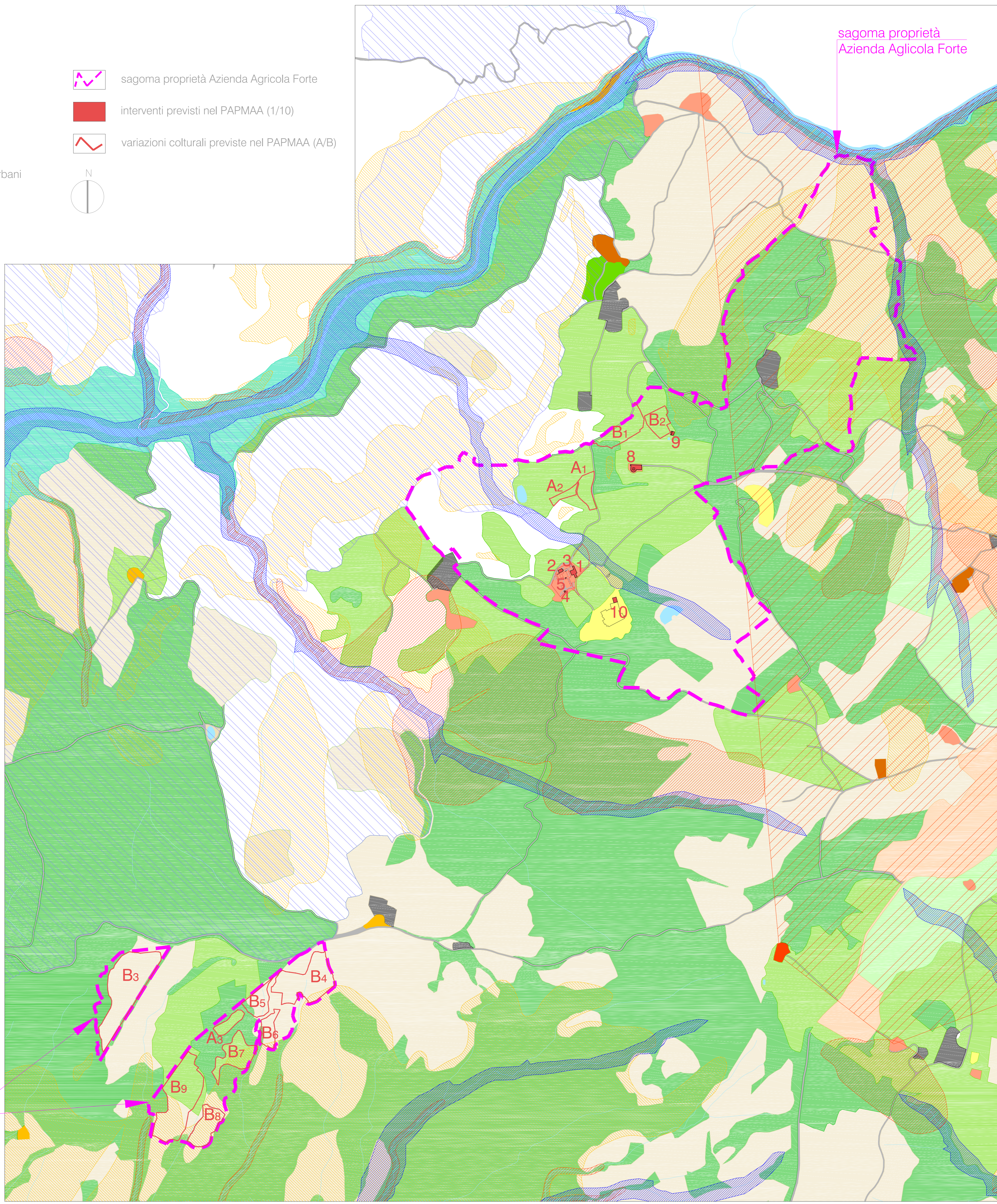
- classi di pericolosità
-  PIE
 -  PIME

siti di interesse regionale (SIR)

-  SIR 100 - Ripa d'Orcia

aree e beni di notevole interesse pubblico (Dlgs 42/2004)

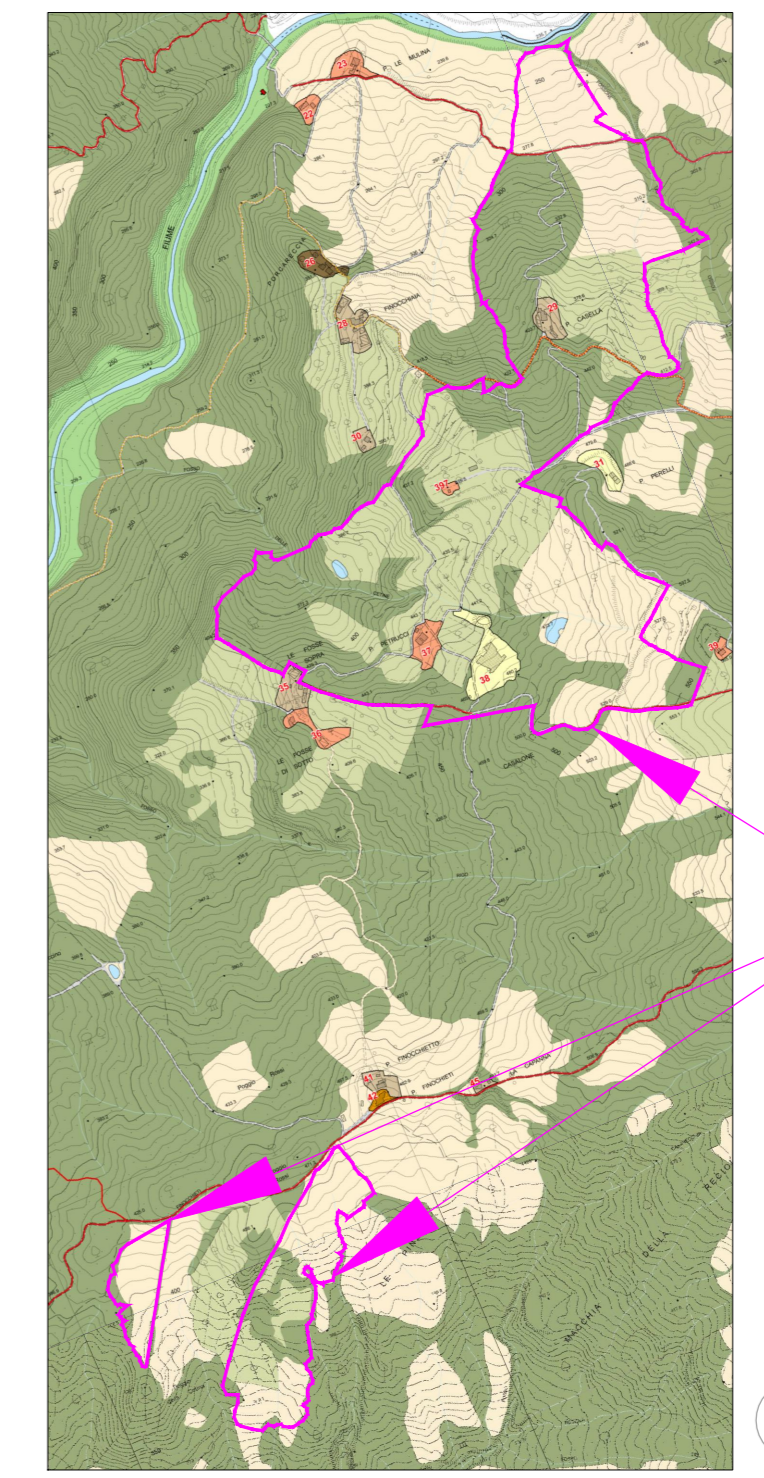
-  aree di notevole interesse pubblico (art. 136, ex 1497)



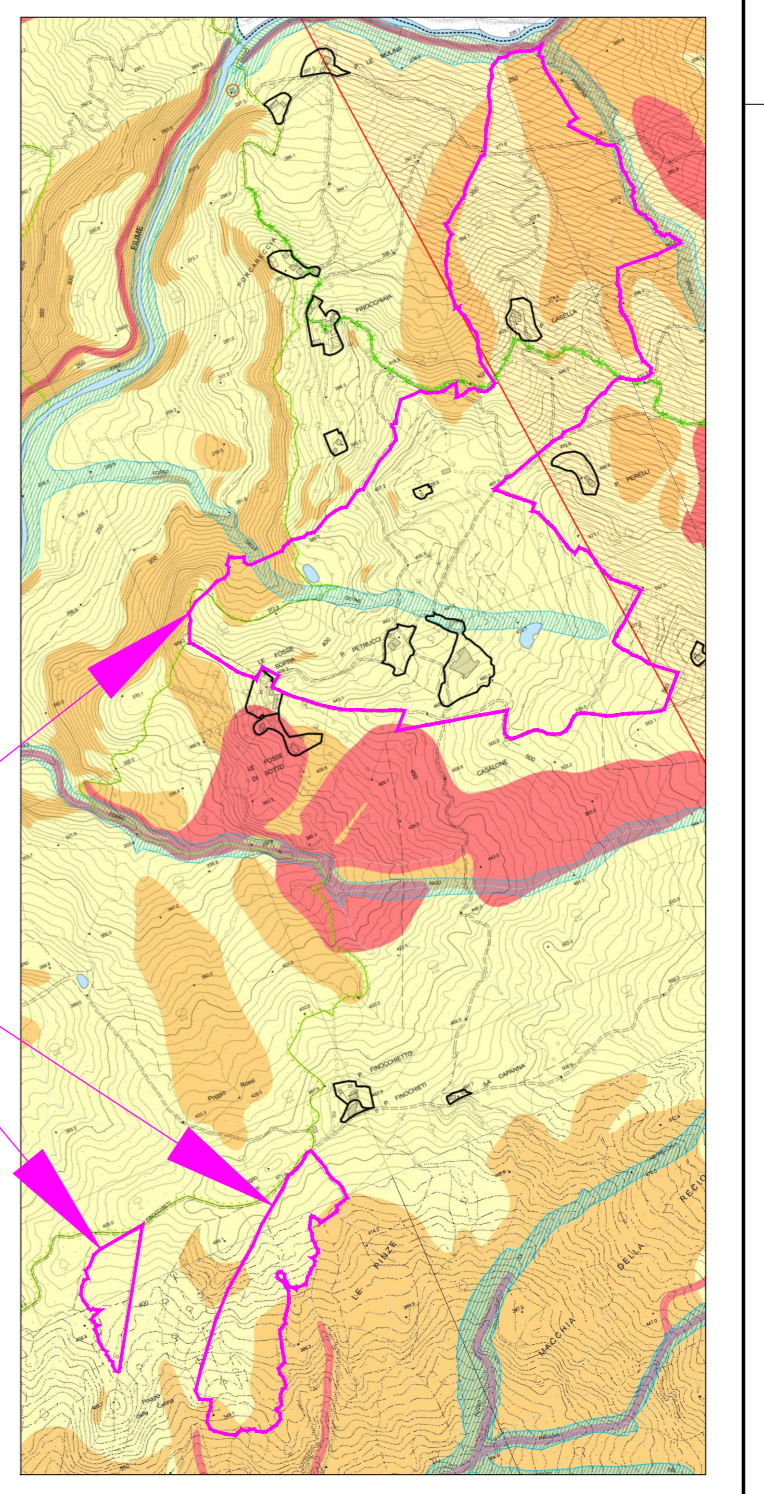
sovrapposizione _ scala 1:5.000

sagoma proprietà Azienda Agricola Forte

sagoma proprietà Azienda Agricola Forte

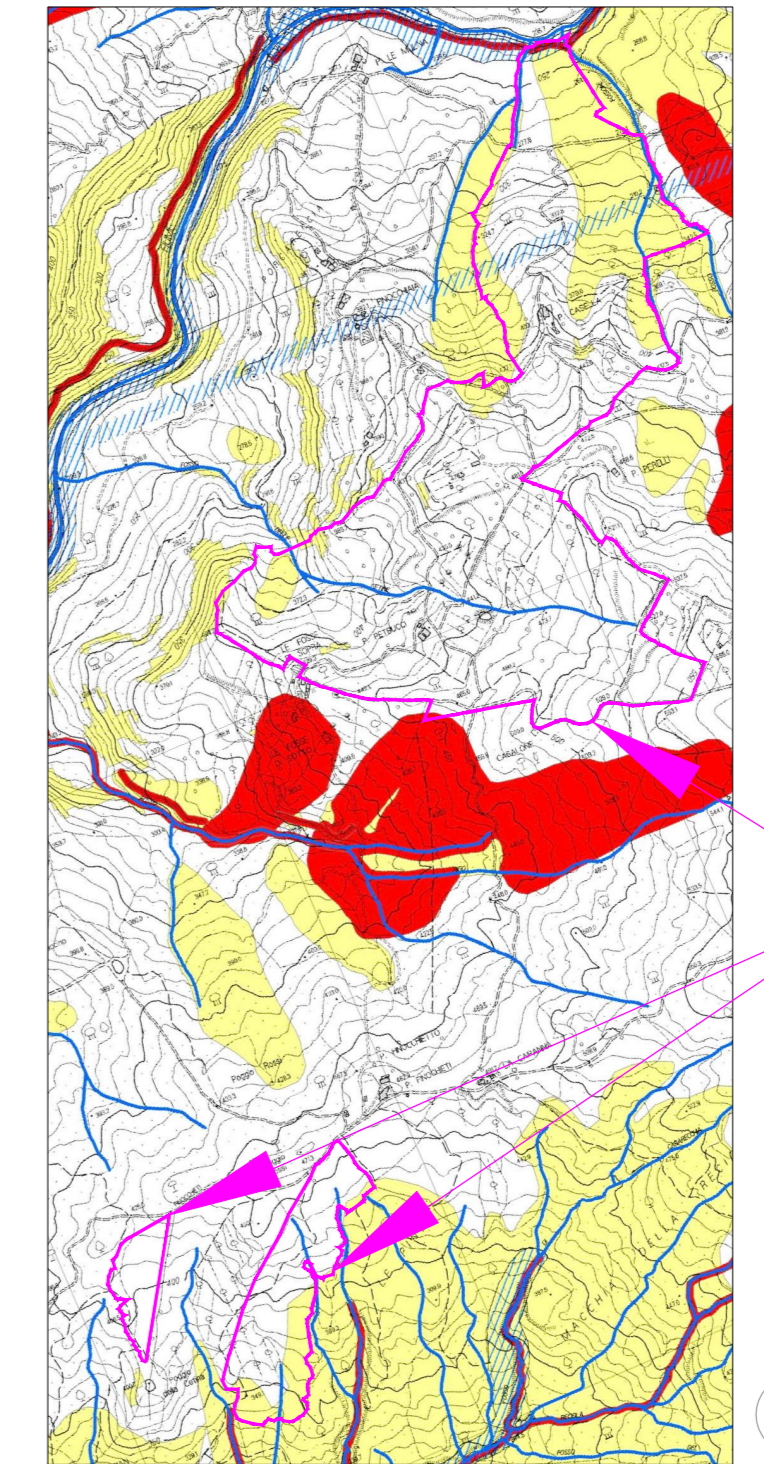


estratto Disciplina del Territorio Rurale Scala 1:20.000



sagoma proprietà Azienda Agricola Forte

estratto Carta dei Vincoli Scala 1:20.000



sagoma proprietà Azienda Agricola Forte

estratto Carta di Adeguamento al P.A.I. Scala 1:20.000

VARIANTE al P.A.P.M.A.A. AGRICOLA FORTE 2012

SOVRAPPOSIZIONE INTERVENTI - TAVOLE R - V - G

Committente	SOC. AGRICOLA FORTE s.s.
Comune di	Castellana d'Orcia (SI), Località Petrucci
Progetto	VARIANTE al P.A.P.M.A.A. AGRICOLA FORTE 2012
Data	marzo 2015
	848x13

ING. PAOLO VAGGAGINI
via Castellana 63 - 53023 Castellana d'Orcia (SI)
tel. 0577 887463 - fax. 0577 887578
paolovaga@libero.it

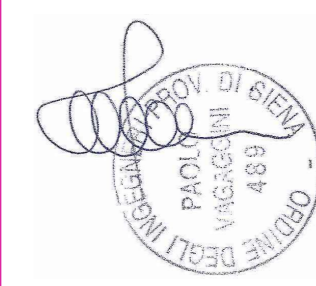


Tavola	6a
Sovrapposizione interventi con:	- Disciplina del Territorio Rurale - Carta dei vincoli - Carta di adeguamento al P.A.I.
scala	1:5.000 - 1:20.000

STUDIO ARCHITETTURA FABRIZIO ZAMBELLI ARCHITETTO



Via S. Bernardino 65 - 24122 Bergamo (Italia) tel +39 035 2719051 r.a. - fax +39 035 4327186
www.studiozambelli.it - e-mail info@studiozambelli.it - pec: info@pec.studiozambelli.it